



X-CAPE



X-CAPE

DETAILS



7" COLOURED TFT SCREEN

RIDE

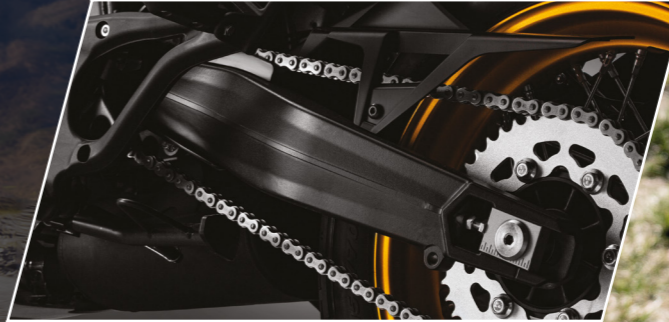


FREEDOM





RIDE FREEDOM



DETAILS



DOUBLE USB CHARGER



MUSIC AND PHONE CONNECTIVITY



FULL LED HEADLIGHTS



50 MM. MARZOCCHI FRONT FORKS



BLACKLIT ELECTRICAL INSTRUMENTS



ADJUSTABLE WINDSCREEN



BREMBO BRAKES
ABS BOSCH DISABLED



TYRE PRESSURE SENSORS
PIRELLI TYRES



ACCESSORIES



TOURING WINDSCREEN



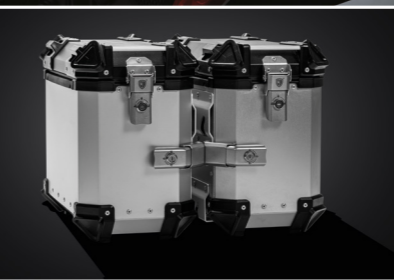
ALLUMINIUM ENGINE GUARD



LOWERED SADDLE 820 MM



SIDE CASE 36 LT.



CRASH BARS



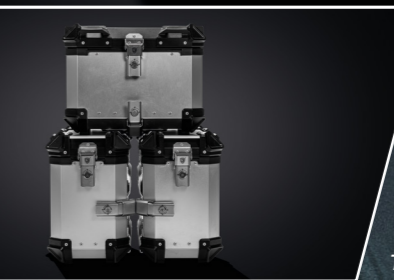
EXHAUST SC PROJECT



TOP CASE 38 LT.



TRAVEL BAGS - TOP AND SIDE CASES



COLOURS



RED PASSION



ALLOY RIMS



SPOKED RIMS



SMOKY ANTHRACITE



CARRARA WHITE



GOLD WHEELS EDITION
ONLY FOR XCAPE RED PASSION



TECHNICAL DETAILS

X-CAPE

GENERAL MEASUREMENTS

Length x width x height	2200X900X1390
Wheelbase	1490 mm
Dry weight	213 kg
Seat height	820 mm / 845 mm
Tank capacity	Approx. 18 L.
Minimum ground clearance	190 mm

CHASSIS

Steel trellis frame
Aluminum swingarm

RIMS AND TYRES

Rims	Spoke or alloy tubeless rims
Front tyre	110/80-19M/C-Pirelli Scorpion Rally STR
Rear tyre	150/70-17M/C-Pirelli Scorpion Rally STR

BRAKING SYSTEM

Front brake	Dual 298 mm discs, floating calipers, 2 pistons
Rear brake	Single 255 mm disc, 2 pistons
ABS	BOSCH ABS 9.1 Mb (switchable)

ENGINE

Engine	2 in-line cylinders, 4-stroke engine
Engine size	649 cc
Bore x Stroke	83 mm x 60 mm
Compression ratio	11.3:1
Maximum torque	54 Nm / 5,6 kgm / 7000 rpm
Maximum power	44 kW / 60 HP / 8250rpm
Injection system	BOSCH EFI
Maximum speed	170 Km/h
Cooling system	Liquid
Fuel distribution	DOHC 8-valve distribution
Emission class	Euro 5

SUSPENSIONS

Front suspension	Marzocchi Upside-Down 50 mm, 175 mm wheel travel adjustable spring preload, damping setting in rebound and compression
Rear suspension	Kayaba monoshock wheel travel 165 mm adjustable for spring preload, damping setting in rebound





MOTO MORINI s.r.l. - Via Beri, 24 - 27020 Trivolzio Pavia/Italy - C.F./P. Iva 07500980961 - T. +39 0382 193881 - factory@motomorini.eu - motomorini.eu - pressoffice@motomorini.eu

IMPORTANT: The photos and the information in this catalog may depict prototypes that could undergo significant changes during industrialization and are for information and reference purposes only, so they are not binding to Moto Morini s.r.l ("Moto Morini"). This catalog circulates international, and some products may not be available and/or their characteristics may vary in compliance with various local legislations. The photographs published in this catalog show only professional riders under controlled road conditions. Do not imitate similar driving behaviors that could be dangerous to you or other road users. For more information visit www.motomorini.eu